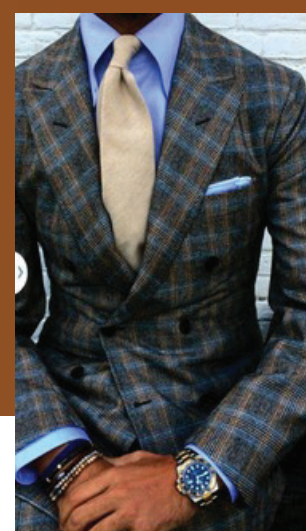


March 2026

THE TAILORED EXPERIENCE

a Tailored Image Newsbrief

The Power of Fit: Why Proper Tailoring Changes Everything



When it comes to personal style, the most important factor isn't the brand, the fabric or even the color. It's the fit.

A well-fitting garment can completely transform how you look and feel. Whether it's a suit, jacket, dress shirt or trousers, proper tailoring elevates clothing from something you wear to something that truly represents you. The difference between "good enough" and exceptional often comes down to a few precise adjustments made by a skilled clothier.

Fit Is the Foundation of Style

Custom tailoring is made to align with your unique proportions. Sleeves are adjusted to the correct length, jackets are shaped to the shoulders and waist, and trousers are hemmed and balanced to create a clean, natural drape. The result is a silhouette that looks intentional, confident, and refined.

Confidence You Can Feel

When clothing fits correctly, the change is immediate. Jackets sit comfortably on the shoulders, shirts move with the body and trousers break just right over the shoes. Nothing pulls, bunches or feels awkward.

This comfort translates directly into confidence.

Tailoring Enhances Your Natural Shape

Great tailoring isn't about making clothing tighter. It's about balance and proportion.

A skilled clothier understands how to shape a garment so it complements the wearer's build. Jackets are structured to frame the shoulders and create a clean line through the torso. Shirts are tapered for a flattering profile without restricting movement. Trousers are adjusted to achieve the ideal break and drape.

These subtle refinements highlight your natural shape while maintaining comfort and elegance.

An Investment in Your Wardrobe

Custom tailored clothing extends the value of your wardrobe. Even small adjustments, hemming trousers, taking in a waist or adjusting sleeve length, can dramatically improve the look of a garment.

Over time, a wardrobe built around well-fitting pieces becomes more versatile, more polished and more enduring.

The Tailored Image Difference

At Tailored Image, we believe that fit is the most powerful element of personal style. Every client's body, posture and preferences are unique and our approach reflects that individuality.

Through thoughtful measurement, expert tailoring and attention to detail, we ensure that every garment is shaped specifically for you. The goal is simple: clothing that feels natural, looks exceptional and reflects the best version of yourself.

Because when a garment fits perfectly, everything changes.

Contact us and we'll make sure your fit is perfect!



TAILOREDIMAGE